

Plan 2204



This ranch style home is designed for living. A private master suite at the front of the home includes a five piece bath, and a huge walk in closet! A light filled great room is perfect for entertaining with the adjacent open kitchen. An adjacent dining room can easily be converted into a study. Two additional bedrooms and a bathroom are also on the main floor. Don't forget the large front porch!

Plans include an option for a wrap around porch (shown in the illustration), and an expanded garage.

BLUE STONE
design group

thebluestonedesigngroup.com

Plan 2204

Old Town Series

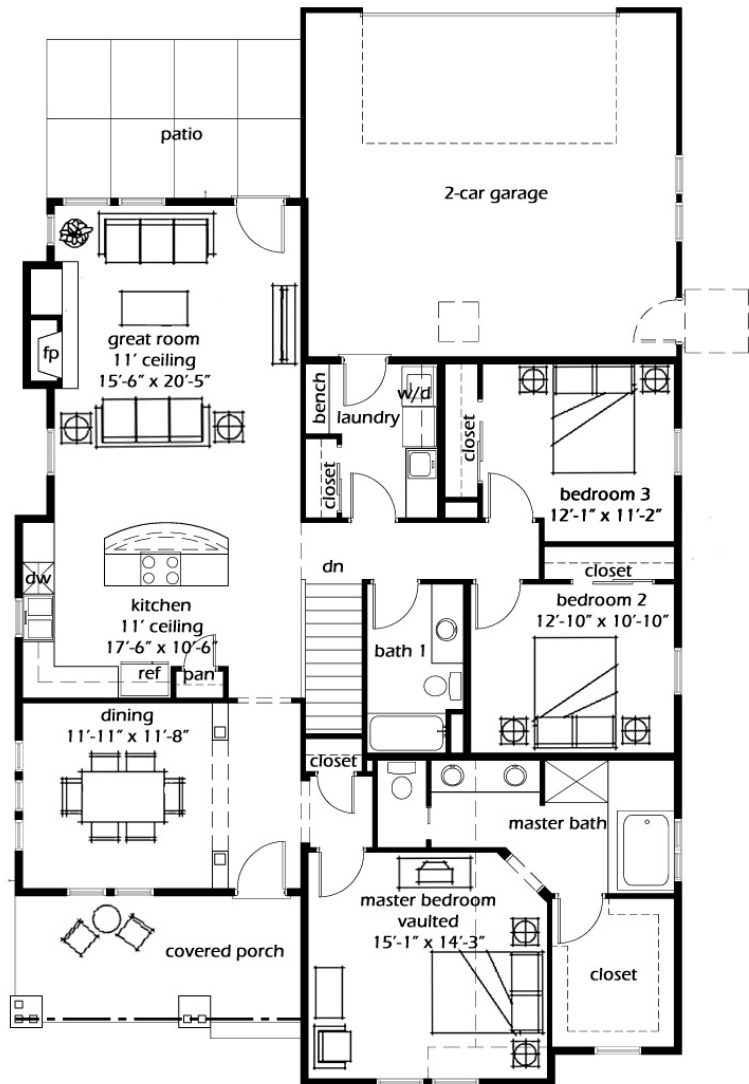
Ranch Design
1,860 finished square feet
9' Basement
3 bedrooms
2 baths
Alley Load Attached Garage

Design Features

Large Front Porch
Living in Place Design
All Interior Doorways 2'-10"
3'-6" Wide Hallways
Basement Construction

Energy Features

2x6 Construction
Energy Trusses
2' Overhangs
Small Footprint
90% Efficient Furnace
Attic Fan



Main Level

1,860 sq. ft.

Preliminary

BLUE STONE
design group

thebluestonedesigngroup.com